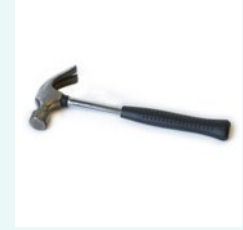
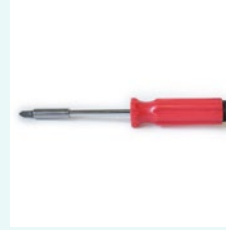


# HOW TO INSTALL STANDOFFS

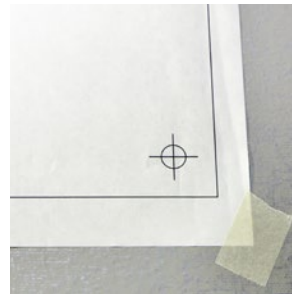
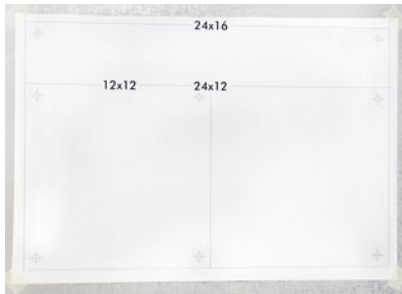
## PACKAGE CONTENTS:



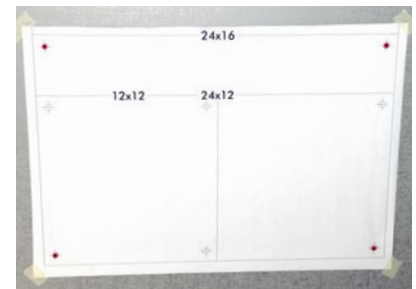
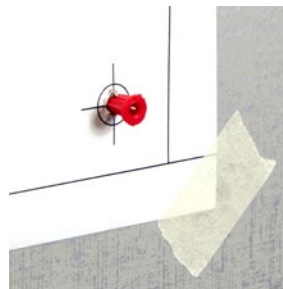
## TOOLS NEEDED:



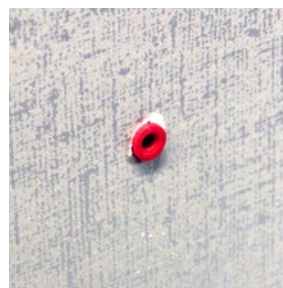
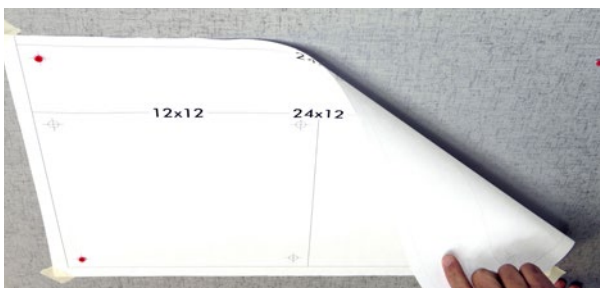
1. Choose where you'd like to display your Standoff Metal Print on your wall. Then, cut down the paper template to your metal print size and tape it to the space in which will your Metal Print will hang. Use a level to ensure that your template is perfectly straight.



2. Use a drill to create one, 3/16" diameter hole through each of the four cross marks. Lightly hammer anchors into each of the four holes.

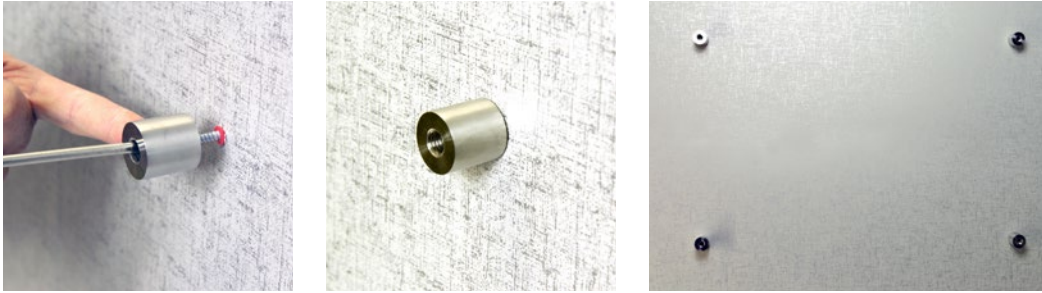


3. Carefully remove the paper template from the wall.



# HOW TO INSTALL STANDOFFS

4. Unscrew the four barrels from the caps of the Standoffs and align one barrel at a time with an anchor. Drill the screw into the barrels, securing them to the wall. The larger opening of the barrel should be facing you.



5. Line up the clear washer, the Metal Print hole, and another clear washer. Finally, screw in the caps, one at a time.

